

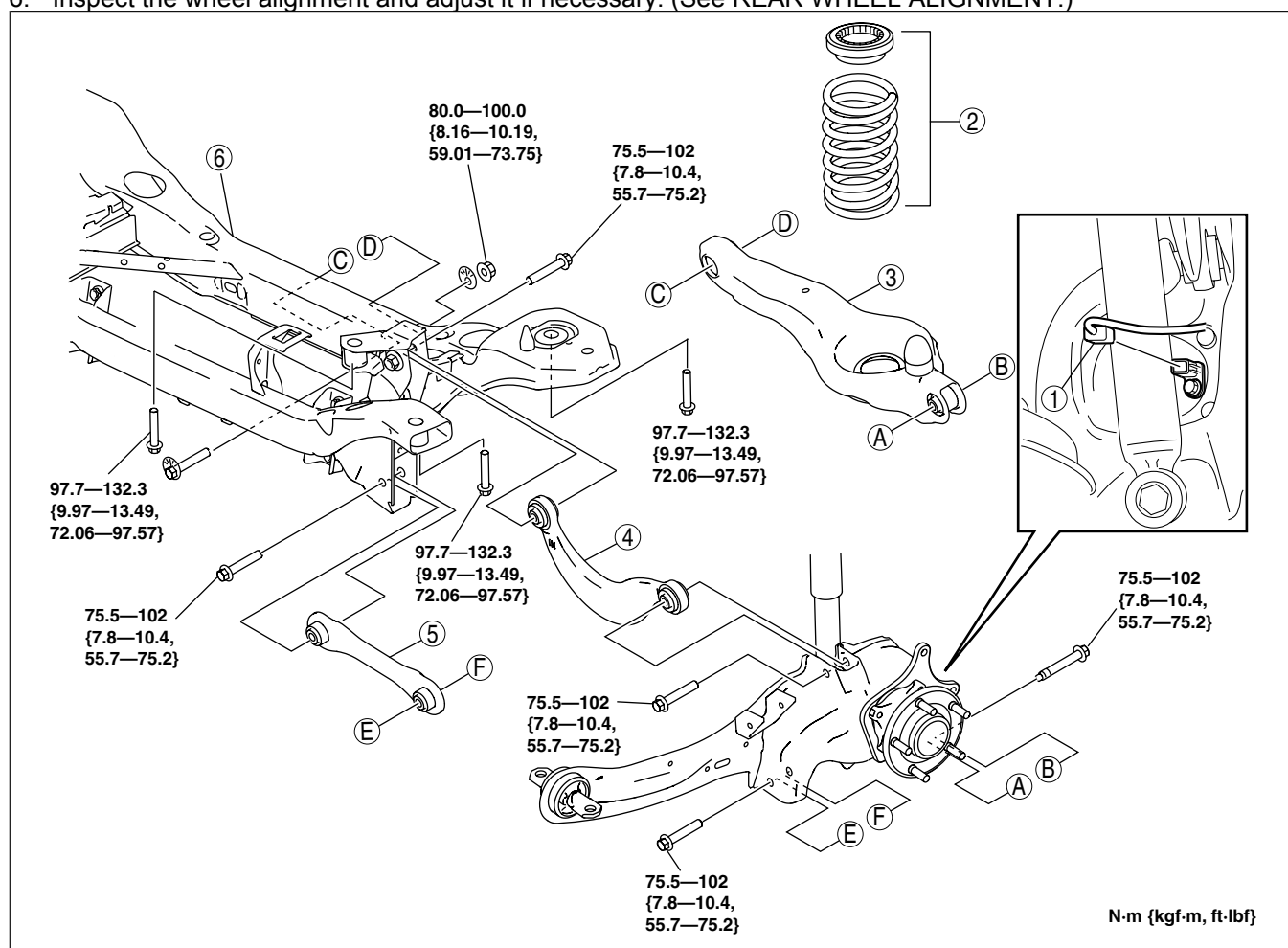
REAR CROSSMEMBER REMOVAL/INSTALLATION

id021400801000

Caution

- Performing the following procedures without first removing the ABS wheel-speed sensor may possibly cause an open circuit in the wiring harness if it is pulled by mistake. Before performing the following procedures, disconnect the ABS wheel-speed sensor wiring harness connector (axle side) and fix the wiring harness to an appropriate place where it will not be pulled by mistake while servicing the vehicle.

1. Remove the rear auto leveling sensor. (See AUTO LEVELING SENSOR REMOVAL/INSTALLATION.)
2. Remove the rear stabilizer. (See REAR STABILIZER REMOVAL/INSTALLATION [MZR-CD (RF Turbo)].) (See REAR STABILIZER REMOVAL/INSTALLATION [EXCEPT MZR-CD (RF Turbo)].)
3. Remove the charcoal canister. (See CHARCOAL CANISTER REMOVAL/INSTALLATION [ZJ, ZY, Z6].) (See CHARCOAL CANISTER REMOVAL/INSTALLATION [LF, L3].)
4. Remove in the order indicated in the table.
5. Install in the reverse order of removal.
6. Inspect the wheel alignment and adjust it if necessary. (See REAR WHEEL ALIGNMENT.)



N·m {kgf·m, ft·lbf}

am3zzw00002870

1	ABS wheel-speed sensor wiring harness connector
2	Rear coil spring (See REAR COIL SPRING REMOVAL/ INSTALLATION.)
3	Rear lower arm (See REAR LOWER ARM REMOVAL/ INSTALLATION.)
4	Rear upper arm (See REAR UPPER ARM REMOVAL/ INSTALLATION.)

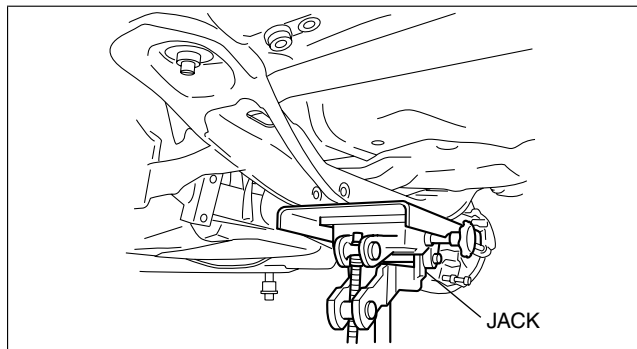
5	Rear lateral link (See REAR LATERAL LINK REMOVAL/ INSTALLATION.)
6	Rear crossmember (See Rear Crossmember Removal Note .)

Rear Crossmember Removal Note

Warning

- **Verify that the crossmember is securely supported by a jack. If the rear crossmember falls off, it can cause serious injury or death, and damage to the vehicle.**

1. Support the rear crossmember with the jack and remove the bolt.
2. Remove the rear crossmember.



am3zzw00002871