

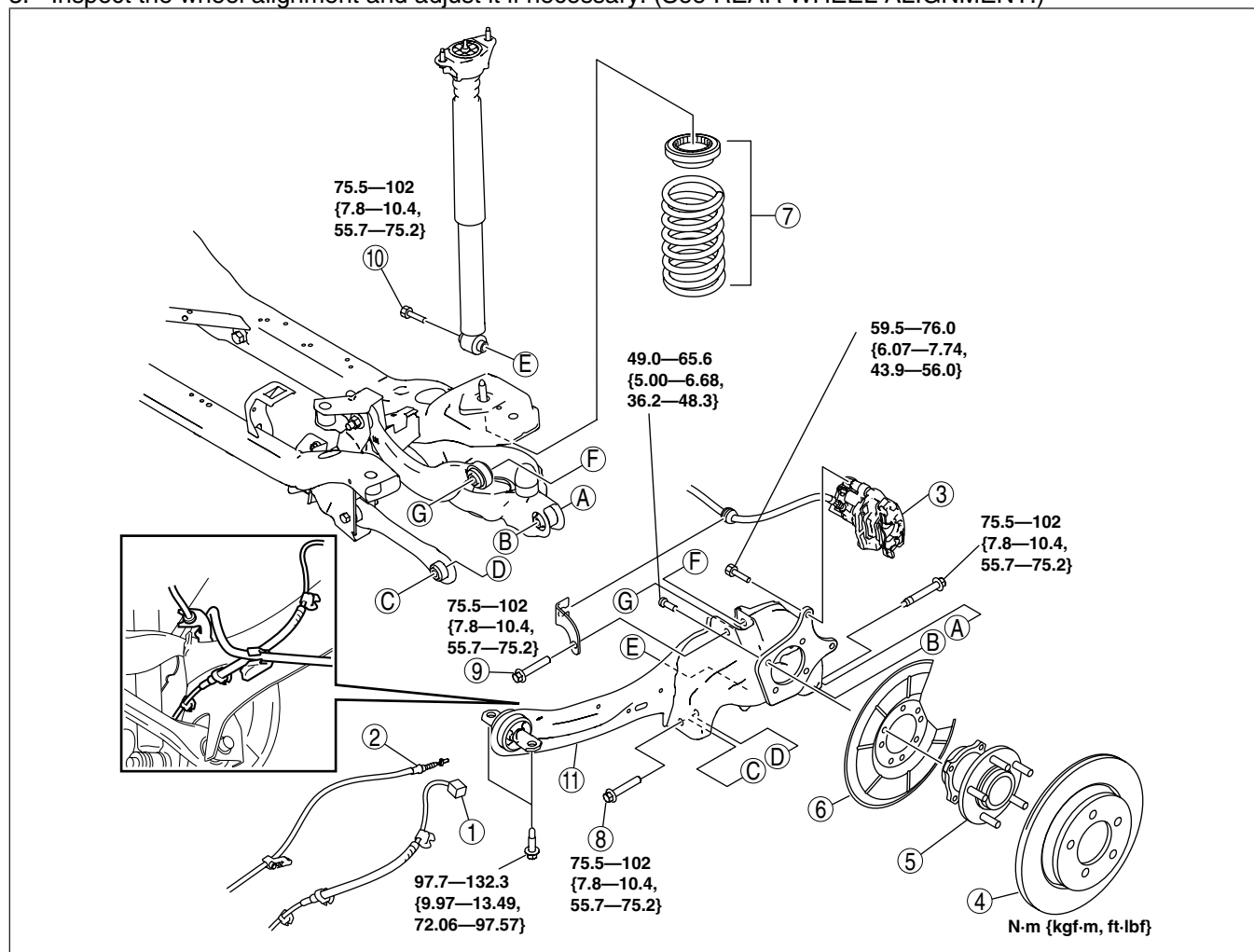
REAR TRAILING LINK REMOVAL/INSTALLATION

id021400802000

Caution

- Performing the following procedures without first removing the ABS wheel-speed sensor may possibly cause an open circuit in the wiring harness if it is pulled by mistake. Before performing the following procedures, disconnect the ABS wheel-speed sensor wiring harness connector (axle side) and fix the wiring harness to an appropriate place where it will not be pulled by mistake while servicing the vehicle.

- Remove in the order indicated in the table.
- Install in the reverse order of removal.
- Inspect the wheel alignment and adjust it if necessary. (See REAR WHEEL ALIGNMENT.)



am3zzw00002865

1	ABS wheel-speed sensor wiring harness connector
2	Parking brake cable
3	Brake caliper component (See Brake Caliper Component Removal Note .)
4	Disc plate
5	Rear hub component
6	Dust cover

7	Rear coil spring component (See REAR COIL SPRING REMOVAL/ INSTALLATION.)
8	Rear lateral link outer bolt (See Rear Lateral Link Outer Bolt Removal Note .)
9	Rear upper arm outer bolt
10	Rear shock absorber lower bolt
11	Rear trailing link (See Rear Trailing Link Installation Note .)

Brake Caliper Component Removal Note

1. Hang the caliper component using a cable and move aside.

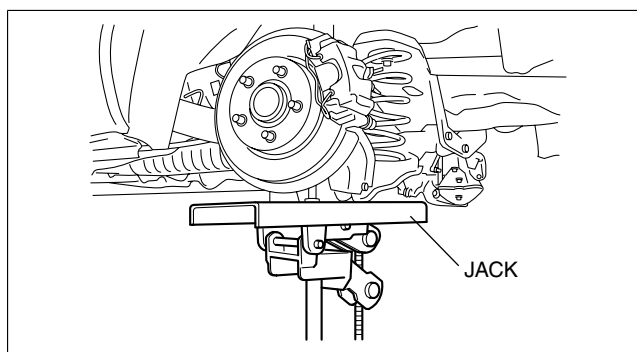
Rear Lateral Link Outer Bolt Removal Note

1. Support the trailing link using a jack.

Caution

- **Verify that the trailing link is securely supported by a jack. If the trailing link falls off, it can cause serious injury or death, and damage to the vehicle.**

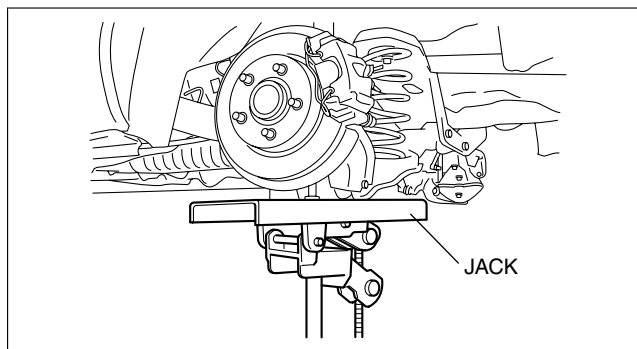
2. Remove the rear lateral link outer bolt.



am3zzw00002866

Rear Trailing Link Installation Note

1. Support the trailing link using a jack.
2. Tighten the trailing link front side bolts.



am3zzw00002866