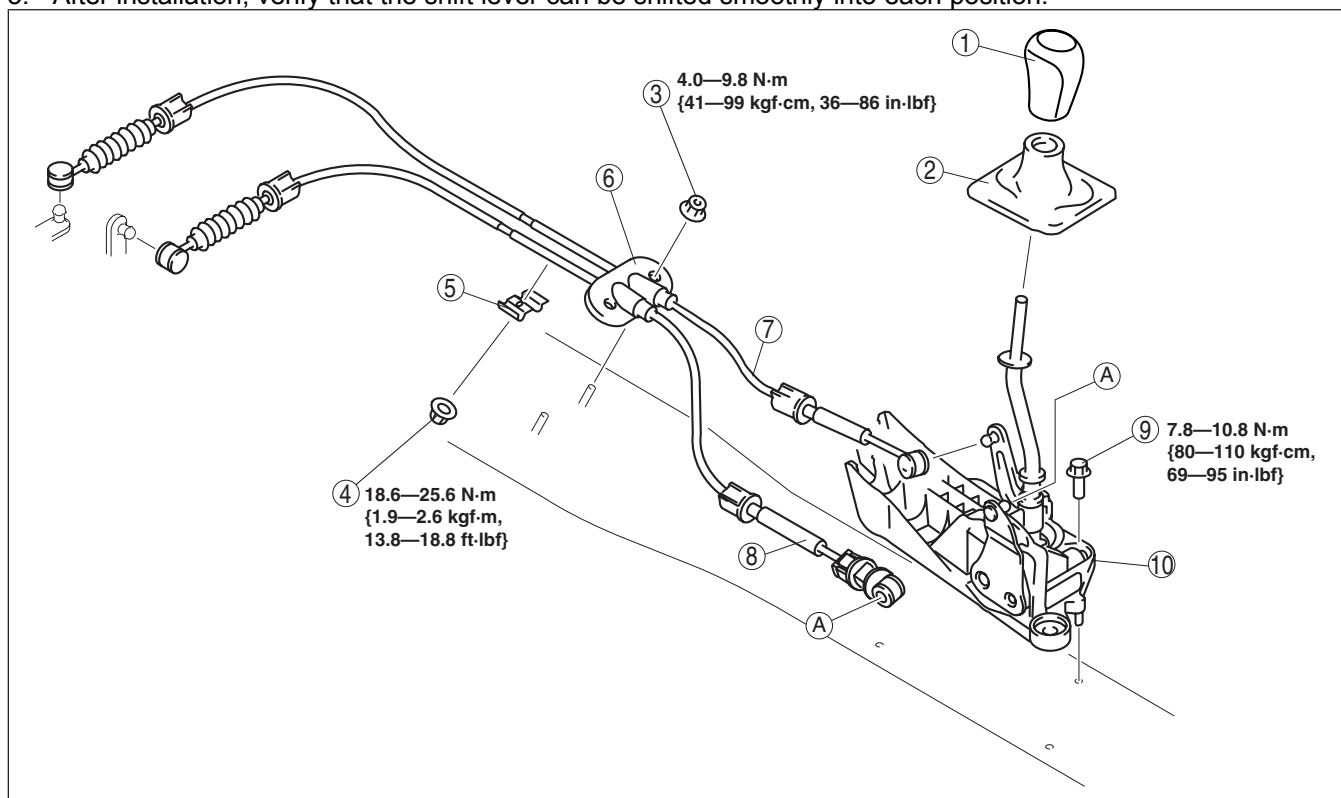


## SHIFT MECHANISM REMOVAL/INSTALLATION [A26M-R]

id0516008000c5

1. Remove the following parts:
  - (1) Battery and battery tray  
(See BATTERY REMOVAL/INSTALLATION [L3 Turbo].)  
(See BATTERY REMOVAL/INSTALLATION [MZR-CD (RF Turbo)].)
  - (2) Air cleaner component  
(See INTAKE AIR SYSTEM REMOVAL/INSTALLATION [L3 Turbo].)  
(See INTAKE-AIR SYSTEM REMOVAL/INSTALLATION [MZR-CD (RF Turbo)].)
  - (3) Console  
(See CONSOLE REMOVAL/INSTALLATION.)
2. When replacing the main shift cable and main select cable, perform the following procedure:
  - (1) Remove the dashboard.  
(See DASHBOARD REMOVAL/INSTALLATION.)
  - (2) Remove the A/C unit.  
(See A/C UNIT REMOVAL/INSTALLATION.)
  - (3) Remove the tunnel member.  
(See EXHAUST SYSTEM REMOVAL/INSTALLATION [L3 Turbo].)  
(See EXHAUST SYSTEM REMOVAL/INSTALLATION [MZR-CD (RF Turbo)].)
  - (4) Remove the member. (L3 Turbo)  
(See EXHAUST SYSTEM REMOVAL/INSTALLATION [L3 Turbo].)
  - (5) Remove the TWC. (L3 Turbo)  
(See EXHAUST SYSTEM REMOVAL/INSTALLATION [L3 Turbo].)
  - (6) Remove the Oxidation catalytic converter. (MZR-CD (RF Turbo))  
(See EXHAUST SYSTEM REMOVAL/INSTALLATION [MZR-CD (RF Turbo)].)
  - (7) Remove the heat insulator (Center).
  - (8) Remove the heat insulator (Front).
3. Remove in the order indicated in the table.
4. Install in the reverse order of removal.
5. After installation, verify that the shift lever can be shifted smoothly into each position.



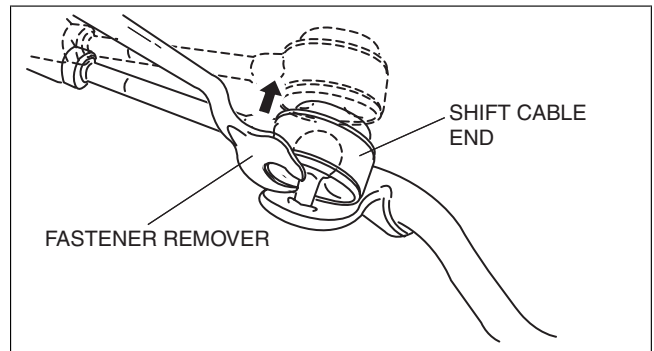
am3zzw00003400

1	Shift lever knob
2	Boot panel
3	Nuts
4	Nut
5	Bracket
6	Seal plate

7	Main shift cable (See Main Shift Cable and Main Select Cable Removal Note .)
8	Main select cable (See Main Shift Cable and Main Select Cable Removal Note .) (See Select Cable Installation Note .)

**Main Shift Cable and Main Select Cable Removal Note**

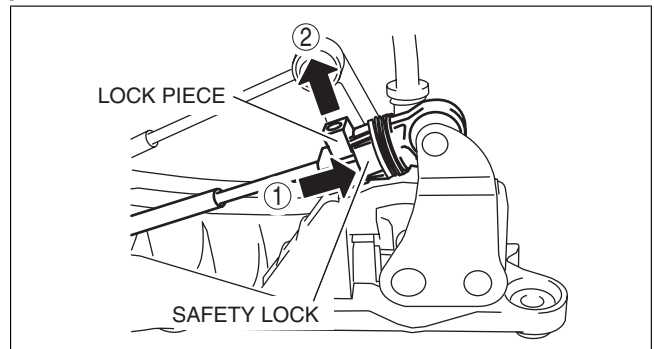
1. Remove the both shift cable end and select cable end using a fastener remover.



am3zzw00003749

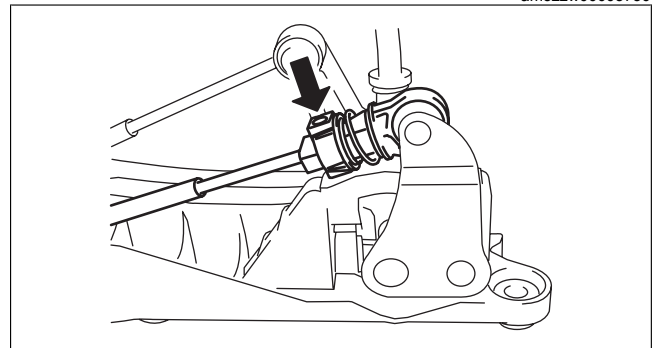
**Select Cable Installation Note**

1. Make sure that the shift lever (transaxle side) is in neutral.
2. Push the safety lock, then unlock the lock piece of the select cable in the order shown in the figure.
3. Shift the shift lever to neutral.



am3zzw00003750

4. Lock the lock piece of the selector cable in the figure.
5. Shift the shift lever from neutral to other position, and make sure that there are no other components in that area to interfere with the lever.



am3zzw00003751