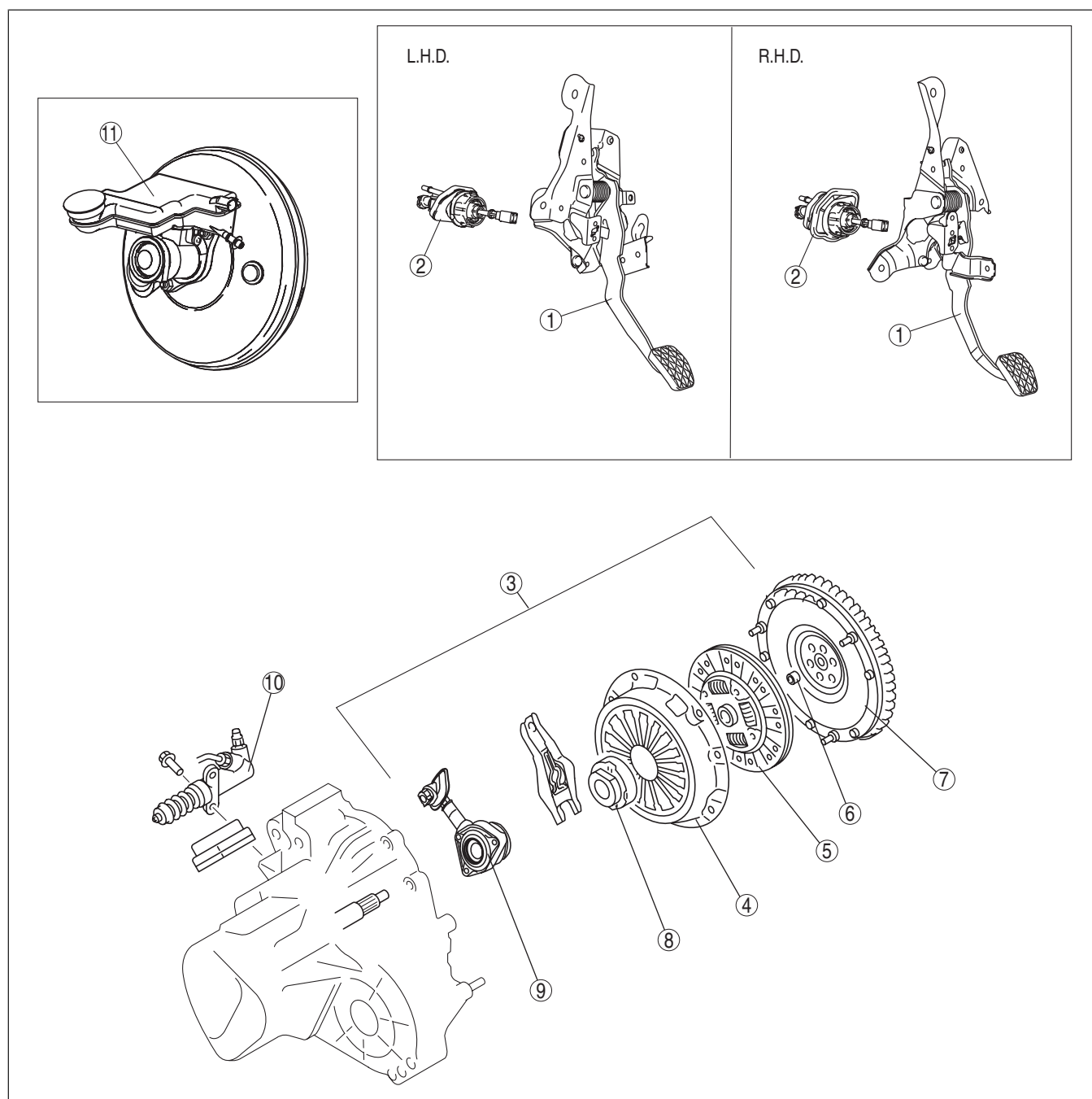


CLUTCH LOCATION INDEX

id051000800400



am3zzw00004336

1	Clutch pedal (See CLUTCH PEDAL INSPECTION.) (See CLUTCH PEDAL REMOVAL/INSTALLATION.)
2	Clutch master cylinder (See CLUTCH MASTER CYLINDER REMOVAL/ INSTALLATION.)
3	Clutch unit (See CLUTCH UNIT REMOVAL/INSTALLATION [F35M-R, G35M-R, G66M-R, A26M-R].) (See CLUTCH UNIT REMOVAL/INSTALLATION [J65M-R].)
4	Clutch cover (See CLUTCH COVER INSPECTION.)
5	Clutch disc (See CLUTCH DISC INSPECTION.)

6	Pilot bearing (F35M-R, G35M-R, G66M-R, A26M-R) (See PILOT BEARING INSPECTION [F35M-R, G35M-R, G66M-R, A26M-R].)
7	Flywheel (See FLYWHEEL INSPECTION [F35M-R, G35M-R, G66M-R].) (See FLYWHEEL INSPECTION [J65M-R, A26M- R].)
8	Clutch release collar (F35M-R, G35M-R, G66M-R, A26M-R) (See CLUTCH RELEASE COLLAR INSPECTION [F35M-R, G35M-R, G66M-R, A26M-R].)
9	Clutch release cylinder component (J65M-R) (See CLUTCH RELEASE CYLINDER REMOVAL/ INSTALLATION [J65M-R].) (See CLUTCH RELEASE COLLAR INSPECTION [J65M-R].)

10	Clutch release cylinder (F35M-R, G35M-R, G66M-R, A26M-R) (See CLUTCH RELEASE CYLINDER REMOVAL/INSTALLATION [F35M-R, G35M-R, G66M-R, A26M-R].)
----	--

11	Clutch fluid (See CLUTCH FLUID INSPECTION.) (See CLUTCH FLUID AIR BLEEDING/REPLACEMENT.)
----	--